



ADSL LINE TRANSFORMER SURFACE MOUNT MAGNETICS

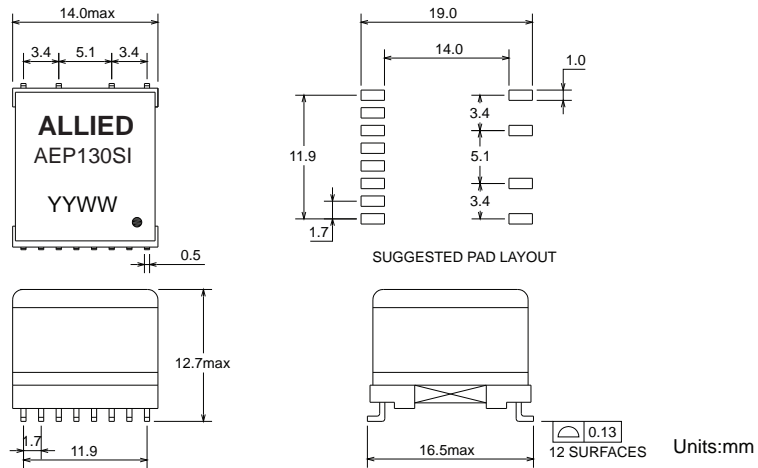
- EN60950 Basic Insulation compliant 250Vrms
- SMD compact foot print design
- Industrial operating temp: -40°C to +85°C

Electrical Specifications @25°C

Part Number	Turns Ratio (10KHz,0.1V)		LL (100KHz,0.1V)		Cww (100KHz,0.1V)		
	AEP130SI	16-9:1-4 (short 11-14,2-3)	16-9:5-8 (short 11-14,6-7)	16-9 (short 11-14,1-2-3-4)	16-9 (short 11-14,5-6-7-8)	16-1 (short 11-14,2-3)	16-5 (short 11-14,6-7)
3.8:1 ±2%		2:1 ±2%	7uH max	6uH max	80pF max	120pF max	55pF max
Continue							
OCL (10KHz,0.1V)		DCR			THD (30KHz,3.16Vrms)	LB (30KHz~650KHz)	Hi-Pot VAC (1mA/1s)
16-9 (short 11-14)		16-9 (short 11-14)	1-4 (short 2-3)	5-8 (short 6-7)			
200uH ±6%	0.78 Ω ±10%	0.29 Ω ±10%	0.62 Ω ±10%	-85dB max	55dB min	1875	

All specifications subject to change without notice.

MECHANICAL



Unless otherwise specified all tolerances are: ±0.25 in mm

SCHEMATICS

