

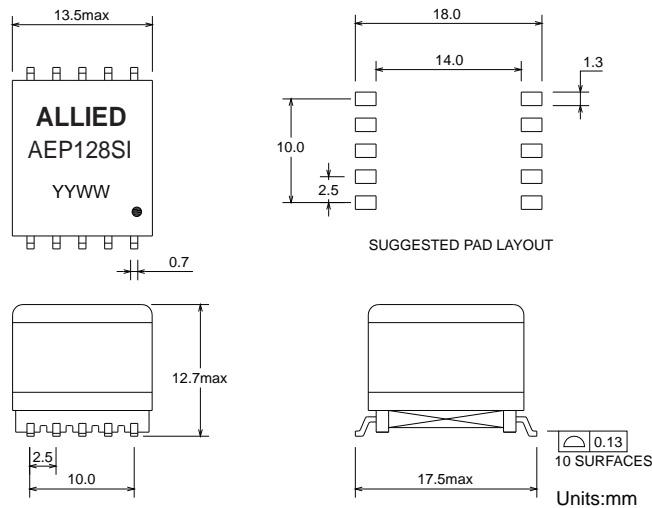
ADSL LINE TRANSFORMER SURFACE MOUNT MAGNETICS

- EN60950 Basic Insulation compliant 250Vrms
- SMD compact foot print design
- Industrial operating temp: -40°C to +85°C

Electrical Specifications @25°C					
Part Number	Turns Ratio (10KHz,0.1V)	OCL (10KHz,0.1V)	LL (100KHz,0.1V)	C _{ww} (100KHz,0.1V)	
AEP128SI	10-7:1-4:(short8-9,2-3)	10-7(short 8-9)	10-7(short 8-9,1-2-3-4)	1-10(short 2-3, 8-9)	
	0.794:1±2%	470uH±5%	14uH max	40pF max	
	Continue				
	DCR		THD	LB	Hi-Pot VAC (1mA/2S)
	10-7(short 8-9)	1-4(short 2-3)	10KHz,2V	1.1MHz	(1mA/2S)
1.15Ω±10%	1.6Ω±10%	-70dB max	55dB min	1500	

All specifications subject to change without notice.

MECHANICAL



Unless otherwise specified all tolerances are: ±0.25 in mm

SCHEMATICS

