

# ADSL LINE TRANSFORMER SURFACE MOUNT MAGNETICS

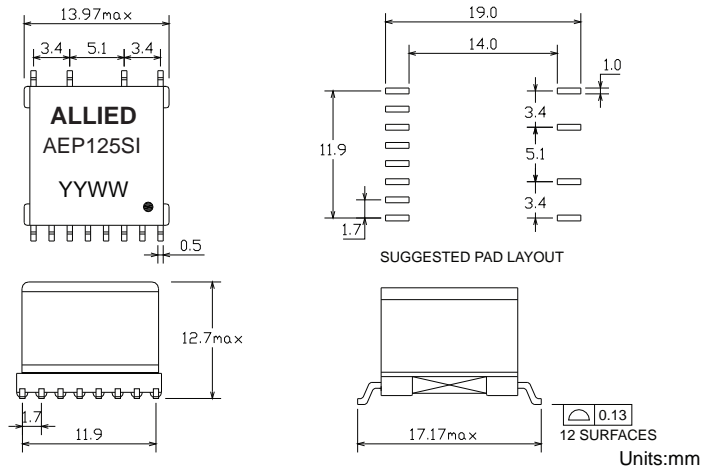
- EN60950 Basic Insulation compliant 250Vrms
- SMD compact foot print design
- Industrial operating temp: -40°C to +85°C

## Electrical Specifications @25°C

| Part Number           | Turns Ratio (10KHz,0.1V) |                               | LL (100KHz,0.1V)              |                              | C <sub>ww</sub> (100KHz,0.1V) |                            |                            |
|-----------------------|--------------------------|-------------------------------|-------------------------------|------------------------------|-------------------------------|----------------------------|----------------------------|
|                       | AEP125SI                 | 16-9:1-4<br>(short 11-14,2-3) | 16-9:5-8<br>(short 11-14,6-7) | 16-9<br>(short11-14,1-2-3-4) | 16-9<br>( short11-14,5-6-7-8) | 16-1<br>( short 11-14,2-3) | 16-5<br>( short 11-14,6-7) |
| 1:1 ±2%               |                          | 4.28:1 ±2%                    | 3.5 ±uH                       | 10 ±3uH                      | 37.5 ±12 pF                   | 14.5 ±4 pF                 | 22 ±7pF                    |
| Continue              |                          |                               |                               |                              |                               |                            |                            |
| OCL (10KHz,0.1V)      |                          | DCR                           |                               |                              | THD (30KHz,2Vrms)             | Hi-Pot VAC (1mA/1s)        |                            |
| 16-9<br>(short 11-14) |                          | 16-9<br>(short11-14)          | 1-4<br>(short2-3)             | 5-8<br>(short6-7)            |                               |                            |                            |
| 400uH ±10%            |                          | 1.1Ω ±15%                     | 1.1Ω ±15%                     | 1.1Ω ±15%                    | -80dB max                     | 1875                       |                            |

All specifications subject to change without notice.

## MECHANICAL



Unless otherwise specified all tolerances are: ±0.25 in mm

## SCHEMATICS

