

# ADSL LINE TRANSFORMER SURFACE MOUNT MAGNETICS

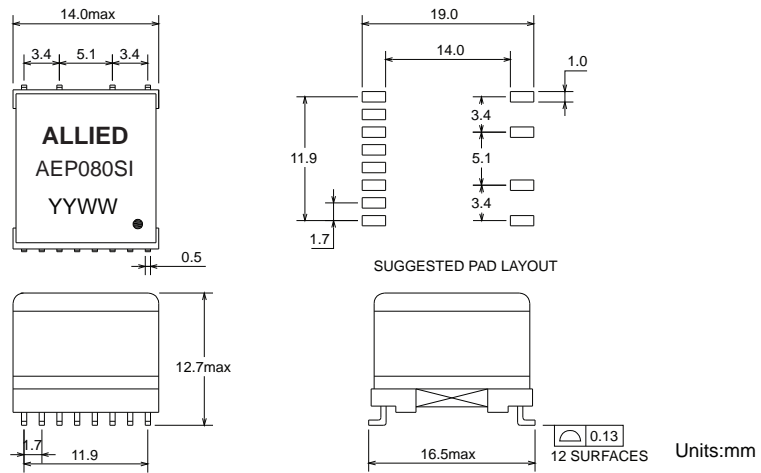
- EN60950 Basic Insulation compliant 250Vrms
- SMD compact foot print design
- Industrial operating temp: -40°C to +85°C

## Electrical Specifications @25°C

Part Number	Turns Ratio (10KHz,0.1V)		OCL (10KHz,0.1V)		LL (100KHz,0.1V)		Cww (100KHz,0.1V)		
	AEP080SI	16-9:1-4 (short 11-14,2-3)	16-9:5-8 (short 11-14,6-7)	16-9 (short 11-14)		16-9 (short 11-14,1-2-3-4-5-6-7-8)		16-9 (short 11-14,1-2-3-4-5-6-7-8)	
4.29:1 ±2%		1:1 ±2%	2mH ±5.8%		20uH max		20pF max		
Continue									
DCR						THD	LB	Hi-Pot VAC	
16-11		14-9	1-3	2-4	5-7	6-8	(30KHz,3.162Vrms)	(35KHz~650KHz)	(1mA/6s)
0.6Ω max	0.6Ω max	0.95Ω max	0.95Ω max	0.3Ω max	0.3Ω max	-90dB max	55dB min	2500	

All specifications subject to change without notice.

## MECHANICAL



Unless otherwise specified all tolerances are: ±0.25 in mm

## SCHEMATICS

