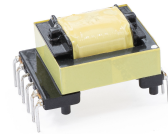




EF25 Transformer

AEF25-4014-A

- EF25 Through Hole Design
- 12 Pin Horizontal Mount Package
- Operating temp: -20°C to +125°C

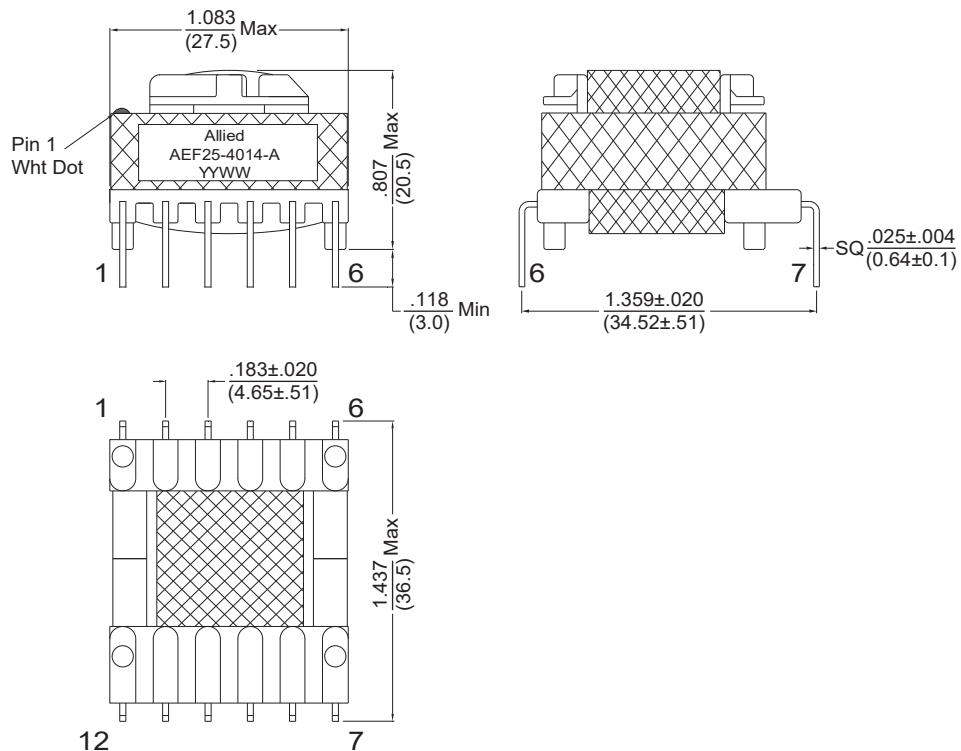


Electrical Specifications @25°C							
Inductance @ 1KHz, 1.0V 3 - 1	Leakage Inductance @ 100KHz, 0.1V 3-1 (Short all other pins)	DCR (mΩ) Max			HI-POT 5mA / 1 Sec.		Turns Ratio (3-1) : (6-5) : (11, 12-7, 8)
		3-1	6-5	11,12-7,8	Pri - Sec	Wdg - Core	
347μH ±10%	8.66μH Max	320	14.0	39.0	3000VAC	1500VAC	1 : 0.137 : 0.235

All specifications subject to change without notice.

MECHANICAL

Dimensions: $\frac{\text{inch}}{\text{mm}}$



SCHEMATICS

