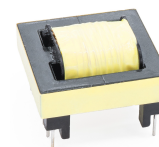




- EE30 Core Design
- Through Hole Mounting
- Operating Temperature Range: -40°C to +125°C



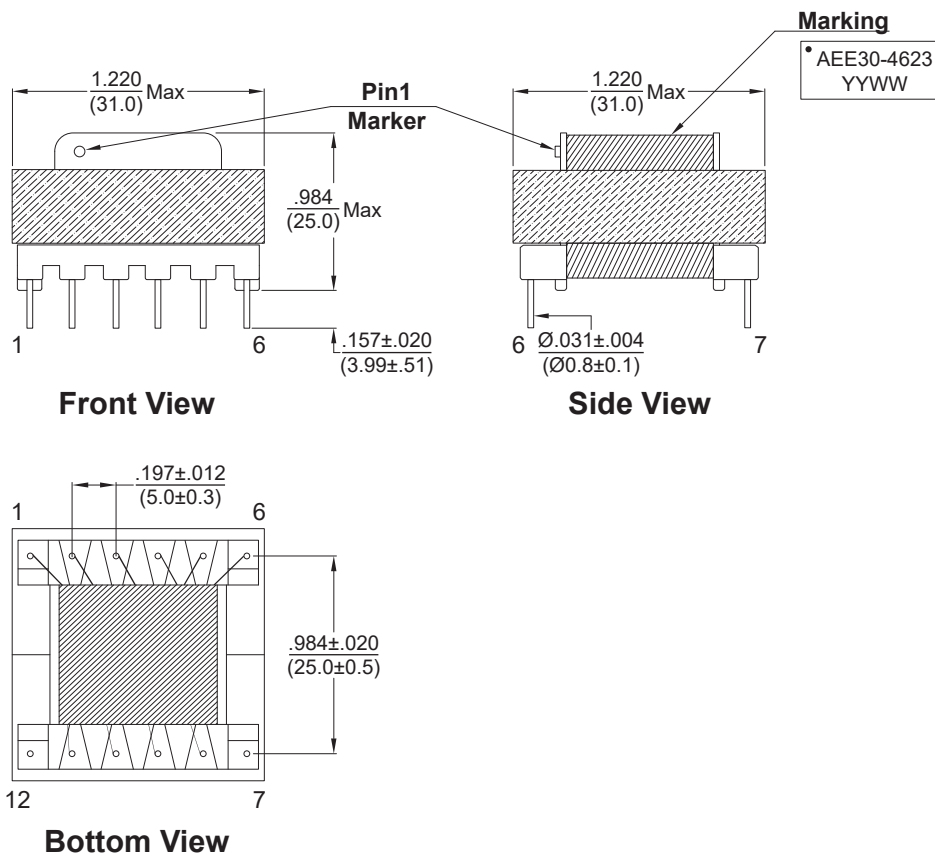
Electrical Specifications @ 25°C					
Inductance @10KHz, 0.1VAC (μH)	Leakage Inductance @100KHz, 0.1VAC (μH)	Turns Ratio @20KHz, 1.0V (±1%)			
1-4 (Tie 2-3)	1-4 (tie 2-3, 8, 9, 10, 11)	(1-3):(2-4)	(1-4):(5-6) (Tie 2-3)	(1-4):(10-8) (Tie 2-3)	(1-4):(11-9) (Tie 2-3)
300 ±10%	6.0 Max	1 : 1	4 : 1	4 : 1	4 : 1

Electrical Specifications @ 25°C							
Hi Pot 5mA / 1Sec / 50Hz			DC Resistance (mΩ)				
1,2,5 - 8,9	1,2 - 5	1,2,5,8,9 - Core	(1-3)	(2-4)	(5-6)	(10-8)	(11-9)
4500Vac	1250Vac	600Vac	155±20%	125±20%	185±20%	50 Max	50 Max

All specifications subject to change without notice.

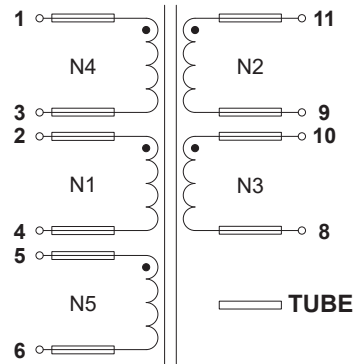
MECHANICAL

DIMENSIONS: $\frac{\text{inch}}{\text{mm}}$





SCHEMATICS



WINDING CONSTRUCTION

