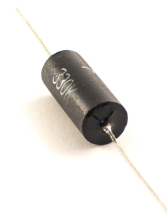
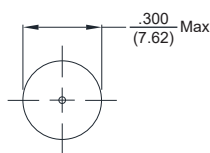
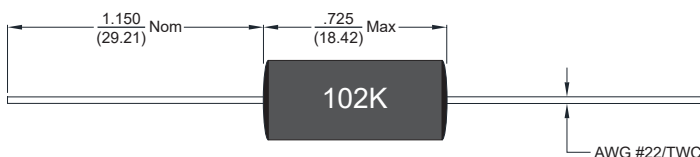




# Axial Shielded Power Chokes

# ASPC70

Dimensions:  $\frac{\text{inch}}{\text{mm}}$



Allied Part Number	Inductance (μH)	Tolerance (%)	DCR (Ω) ±20%	Rated Current (mA)	Allied Part Number	Inductance (mH)	Tolerance (%)	DCR (Ω) ±20%	Rated Current (mA)
ASPC70-1R0M-RC	1.0	20	.011	707	ASPC70-222K-RC	2.2	10	.925	224
ASPC70-1R2M-RC	1.2	20	.012	707	ASPC70-272K-RC	2.7	10	1.02	224
ASPC70-1R5M-RC	1.5	20	.012	707	ASPC70-332K-RC	3.3	10	1.16	224
ASPC70-1R8M-RC	1.8	20	.012	707	ASPC70-392K-RC	3.9	10	1.61	175
ASPC70-2R2M-RC	2.2	20	.012	707	ASPC70-472K-RC	4.7	10	1.89	175
ASPC70-2R7M-RC	2.7	20	.013	707	ASPC70-562K-RC	5.6	10	2.42	130
ASPC70-3R3M-RC	3.3	20	.013	707	ASPC70-682K-RC	6.8	10	2.67	130
ASPC70-3R9M-RC	3.9	20	.014	707	ASPC70-822K-RC	8.2	10	3.19	110
ASPC70-4R7M-RC	4.7	20	.014	707	ASPC70-103K-RC	10	10	4.16	110
ASPC70-5R6M-RC	5.6	20	.017	707	ASPC70-123K-RC	12	10	4.32	80
ASPC70-6R8M-RC	6.8	20	.018	707	ASPC70-153K-RC	15	10	4.96	80
ASPC70-8R2M-RC	8.2	20	.018	707	ASPC70-183K-RC	18	10	5.28	71
ASPC70-100K-RC	10	10	.020	707	ASPC70-223K-RC	22	10	8.06	71
ASPC70-120K-RC	12	10	.022	707	ASPC70-273K-RC	27	10	9.12	56
ASPC70-150K-RC	15	10	.024	707	ASPC70-333K-RC	33	10	12.18	56
ASPC70-180K-RC	18	10	.030	707	ASPC70-393K-RC	39	10	14.16	43
ASPC70-220K-RC	22	10	.032	707	ASPC70-473K-RC	47	10	17.18	43
ASPC70-270K-RC	27	10	.034	707	ASPC70-563K-RC	56	10	18.71	43
ASPC70-330K-RC	33	10	.036	707	ASPC70-683K-RC	68	10	27.36	43
ASPC70-390K-RC	39	10	.038	707	ASPC70-823K-RC	82	10	31.32	43
ASPC70-470K-RC	47	10	.040	707	ASPC70-104K-RC	100	10	42.84	34
ASPC70-560K-RC	56	10	.046	707	ASPC70-124K-RC	120	10	47.16	34
ASPC70-680K-RC	68	10	.047	707	ASPC70-154K-RC	150	10	61.58	27
ASPC70-820K-RC	82	10	.050	707	ASPC70-184K-RC	180	10	69.12	27
ASPC70-101K-RC	100	10	.064	707	ASPC70-224K-RC	220	10	90.0	27
ASPC70-121K-RC	120	10	.068	707	ASPC70-274K-RC	270	10	100	27
ASPC70-151K-RC	150	10	.073	707	ASPC70-334K-RC	330	10	117	22
ASPC70-181K-RC	180	10	.078	707	ASPC70-394K-RC	390	10	125	22
ASPC70-221K-RC	220	10	.082	707	ASPC70-474K-RC	470	10	183	17
ASPC70-271K-RC	270	10	.098	707	ASPC70-564K-RC	560	10	206	17
ASPC70-331K-RC	330	10	.132	556	ASPC70-684K-RC	680	10	282	14
ASPC70-391K-RC	390	10	.142	556	ASPC70-824K-RC	820	10	356	11
ASPC70-471K-RC	470	10	.170	556	ASPC70-105K-RC	1000	10	410	11
ASPC70-561K-RC	560	10	.222	437	ASPC70-125K-RC	1200	10	568	8.6
ASPC70-681K-RC	680	10	.235	437	ASPC70-155K-RC	1500	10	634	8.6
ASPC70-821K-RC	820	10	.247	437	ASPC70-185K-RC	1800	10	950	6.9
ASPC70-102K-RC	1000	10	.440	350	ASPC70-225K-RC	2200	10	964	6.9
ASPC70-122K-RC	1200	10	.470	280	ASPC70-275K-RC	2700	10	987	5.4
ASPC70-152K-RC	1500	10	.640	277	ASPC70-335K-RC	3300	10	1400	5.4
ASPC70-182K-RC	1800	10	.700	277	ASPC70-395K-RC	3900	10	1682	5.4
					ASPC70-475K-RC	4700	10	1700	5.4

All specifications are subject to change without notice.

### Features

- Axial Leaded Power Chokes
- Magnetically Shielded
- Epoxy End Caps for added Lead Strength and Protection

### Electrical

**Inductance Range:** 1.0μH to 4700mH  
**Tolerance:** ±20% (1.0μH to 8.2μH)  
 ±10% (10μH to 4700mH)  
**Test Frequency:** 1KHz  
**Operating Temp:** -55°C to +125°C  
**Current Rating:** Based on 0.33 watt power dissipation for approximately 20°C Temperature Rise.

### Test Equipment

**Inductance:** HP 4263B (1R0M-823K)  
 HP4284-A (104K-475K)  
**Current:** 11021 Current Source  
**DCR:** HP4263B DCR Meter

### Physical

**Packaging:** Bulk  
**Marking:** EIA Inductance code

### Schematics

