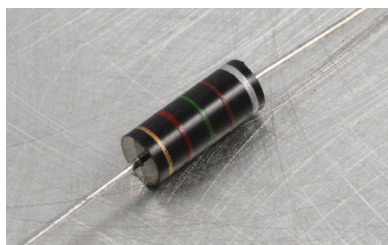
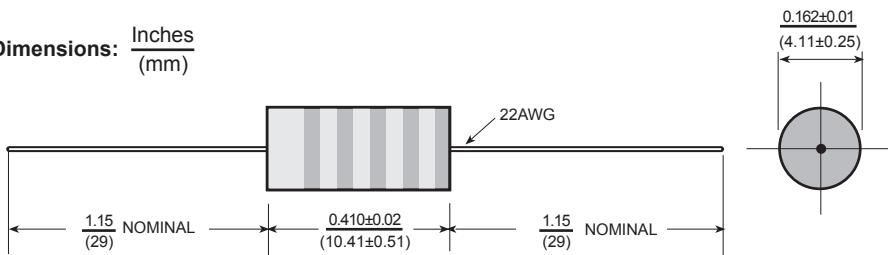




Axial Shielded Inductors AS40



Dimensions: $\frac{\text{Inches}}{\text{(mm)}}$



Allied Part Number	Inductance (μh)	Tolerance (%)	Q Min.	Test Freq. (MHz)	SRF Min. (MHz)	DCR Max. (Ω)	Rated Current (mA)	Incr. Current (mA)
AS40-R10K-RC	.10	10	50	25.0	250	.025	1790	1790
AS40-R12K-RC	.12	10	51	25.0	250	.034	1530	1530
AS40-R15K-RC	.15	10	51	25.0	250	.037	1470	1470
AS40-R18K-RC	.18	10	50	25.0	250	.047	1300	1300
AS40-R22K-RC	.22	10	49	25.0	250	.067	1100	1100
AS40-R27K-RC	.27	10	47	25.0	250	0.11	855	855
AS40-R33K-RC	.33	10	46	25.0	250	0.13	780	780
AS40-R39K-RC	.39	10	44	25.0	250	0.18	670	670
AS40-R47K-RC	.47	10	44	25.0	235	0.25	565	565
AS40-R56K-RC	.56	10	43	25.0	210	0.33	490	490
AS40-R68K-RC	.68	10	42	25.0	190	0.45	420	420
AS40-R82K-RC	.82	10	40	25.0	180	0.59	370	370
AS40-1R0K-RC	1.0	10	44	25.0	140	0.07	1070	1070
AS40-1R2K-RC	1.2	10	44	7.90	130	0.10	895	895
AS40-1R5K-RC	1.5	10	44	7.90	115	0.12	815	815
AS40-1R8K-RC	1.8	10	44	7.90	105	0.14	775	775
AS40-2R2K-RC	2.2	10	44	7.90	100	0.19	650	650
AS40-2R7K-RC	2.7	10	44	7.90	92	0.28	535	535
AS40-3R3K-RC	3.3	10	44	7.90	85	0.35	480	480
AS40-3R9K-RC	3.9	10	44	7.90	75	0.40	450	450
AS40-4R7K-RC	4.7	10	44	7.90	70	0.55	380	380
AS40-5R6K-RC	5.6	10	44	7.90	65	0.72	335	335
AS40-6R8K-RC	6.8	10	50	7.90	55	1.02	280	280
AS40-8R2K-RC	8.2	10	50	7.90	50	1.32	250	250
AS40-100K-RC	10	10	50	7.90	46	1.62	220	220
AS40-120K-RC	12	10	55	2.50	44	2.00	200	200
AS40-150K-RC	15	10	45	2.50	49	0.80	315	250
AS40-180K-RC	18	10	45	2.50	45	0.89	300	235
AS40-220K-RC	22	10	45	2.50	41	0.96	290	220
AS40-270K-RC	27	10	45	2.50	38	1.19	260	200
AS40-330K-RC	33	10	45	2.50	34	1.37	240	190
AS40-390K-RC	39	10	50	2.50	29	1.93	205	180
AS40-470K-RC	47	10	50	2.50	27	2.11	195	175
AS40-560K-RC	56	10	40	2.50	25	2.23	190	160
AS40-680K-RC	68	10	50	2.50	21	2.70	170	150
AS40-820K-RC	82	10	50	2.50	10.5	2.44	180	140
AS40-101K-RC	100	10	50	2.50	10.0	3.12	160	120
AS40-121K-RC	120	10	55	.790	9.7	3.60	150	95
AS40-151K-RC	150	10	55	.790	8.5	4.10	140	90
AS40-181K-RC	180	10	55	.790	8.0	4.40	135	85
AS40-221K-RC	220	10	55	.790	7.5	5.00	125	80
AS40-271K-RC	270	10	55	.790	7.0	5.80	115	70
AS40-331K-RC	330	10	55	.790	6.5	6.40	110	65
AS40-391K-RC	390	10	60	.790	6.2	7.40	105	60
AS40-471K-RC	470	10	60	.790	5.7	9.50	92	58
AS40-561K-RC	560	10	60	.790	4.7	10.5	90	55
AS40-681K-RC	680	10	60	.790	4.5	11.8	80	50
AS40-821K-RC	820	10	57	.790	4.2	13.0	80	45
AS40-102K-RC	1000	10	65	.790	3.8	17.5	70	40
AS40-122K-RC	1200	10	45	.250	1.5	22.1	60	35
AS40-152K-RC	1500	10	45	.250	1.2	26.5	55	33
AS40-182K-RC	1800	10	45	.250	1.0	29.9	50	30
AS40-222K-RC	2200	10	45	.250	.97	33.8	50	27
AS40-272K-RC	2700	10	45	.250	.92	47.3	40	25
AS40-332K-RC	3300	10	45	.250	.84	53.0	40	22
AS40-392K-RC	3900	10	45	.250	.80	73.8	35	20
AS40-472K-RC	4700	10	45	.250	.74	81.6	31	19
AS40-562K-RC	5600	10	44	.250	.73	98.9	28	17
AS40-682K-RC	6800	10	40	.250	.66	111	27	16
AS40-822K-RC	8200	10	40	.250	.54	119	26	15
AS40-103K-RC	10000	10	40	.250	.47	137	24	14
AS40-123K-RC	12000	10	30	.079	.33	143	23	13
AS40-153K-RC	15000	10	30	.079	.29	157	22	12
AS40-183K-RC	18000	10	30	.079	.28	175	21	10
AS40-223K-RC	22000	10	27	.079	.25	274	17	9
AS40-273K-RC	27000	10	27	.079	.21	308	16	8
AS40-333K-RC	33000	10	27	.079	.19	343	15	7.5
AS40-393K-RC	39000	10	27	.079	.17	376	15	6
AS40-473K-RC	47000	10	23	.079	.16	473	13	5.5
AS40-563K-RC	56000	10	23	.079	.14	512	13	5
AS40-683K-RC	68000	10	23	.079	.13	580	12	4
AS40-823K-RC	82000	10	21	.079	.12	618	11	3.5
AS40-104K-RC	100000	10	18	.079	.11	678	11	3

Electrical

Inductance Range: .10μh to 100,000μh

Tolerance: 10% over entire range.

Tighter tolerances available.

Shielding: < 5% coupling with 2 inductors side by side at 1KHz.

Rated Current: Inductance will drop < 10% at rated current.

Test Procedures: L & Q Measured with HP4342A Q-Meter at specified

Frequency. DCR Measured on CH-301

SRF Measured on HP-4191A, HP4291B.

Dielectric Withstanding Voltage:

1000VAC per MIL-STD-202, method 301

Operating Temp.: -55°C to +125°C.

Physical

Marking (on part): 5 Band Color Code per MIL-C-15305.

Marking (on reel): Manufacturers Name, Part Number, Customers Part Number, Invoice Number, Lot or Data Code.

Packaging (bulk): 500 pieces per bag.

Packaging (reel): 3000 pieces per reel.

For Tape and Reel packaging please add "-TR" to the part number.

All specifications subject to change without notice.