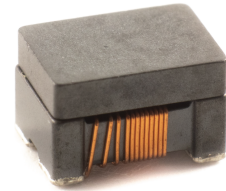
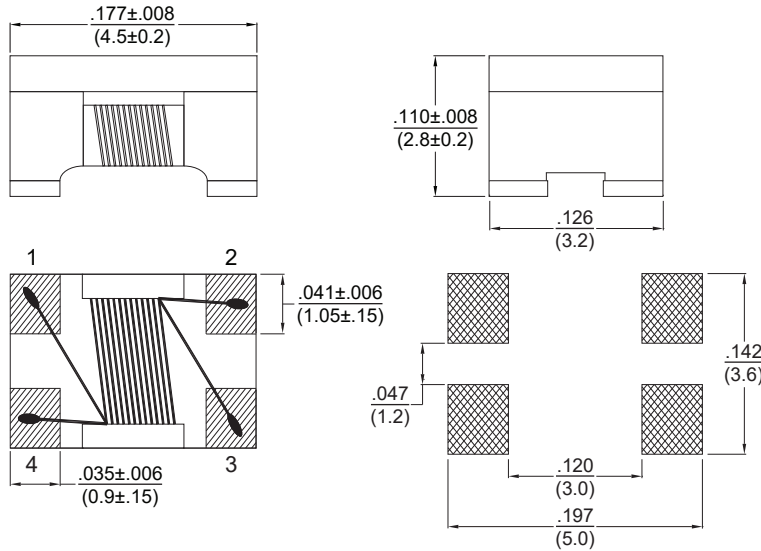




SMD High Current Common Mode Filter

SCM30SH

Dimensions: inch  
(mm)



Recommended PCB Layout

Allied Part Number	Impedance (Ω)		Test Frequency (MHz)	DCR (mΩ) Max	Rated Current (mA) Max	Rated Voltage (Vdc) Max	Withstand Voltage (Vdc) Max	IR (MΩ) Min
	Min	Typ						
SCM30SH-900-RC	68	90	100	50	4000	50	125	10
SCM30SH-231-RC	173	230	100	50	3500	50	125	10
SCM30SH-421-RC	300	420	100	55	3200	50	125	10
SCM30SH-601-RC	450	600	100	60	2500	50	125	10
SCM30SH-901-RC	650	900	100	70	2300	50	125	10
SCM30SH-142-RC	1000	1400	100	100	2000	50	125	10
SCM30SH-282-RC	2100	2800	100	350	900	50	125	10

All specifications subject to change without notice.

**Features**

- High Current Capability up to 4A
- High common mode impedance at high frequency for excellent noise suppression.
- Miniature SMD common mode filter
- Excellent noise attenuation in a small package
- Suitable for automated assembly
- SCM series offers wide impedance range
- MSL Level 1
- Excellent solderability

**Electrical**

**Impedance range:** 90Ω ~ 2800Ω

**Test Frequency:** 100MHz

**Withstand Voltage:** 125Vdc Max

**Operating Temp:** -40°C to +125°C, including self-temperature rise.

**Rated Current:** ΔT 40°C Typ.

**Resistance to Solder Heat**

**Solder Time:** 10±1 Second

**Temp Ramp Immersion/Emmersion**

**Rate:** 25mm/S ±6mm/S

**Number of Heat Cycles:** 1

**Test Equipment**

**[Z]:** HP4291A+HP16197A

**DCR:** HP4338B

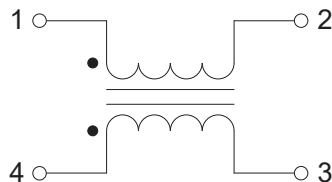
**Insulation Resistance:** HP4339

**Physical**

**Packaging:** 500 pieces per 7 inch reel

**Marking:** None

**Schematic**

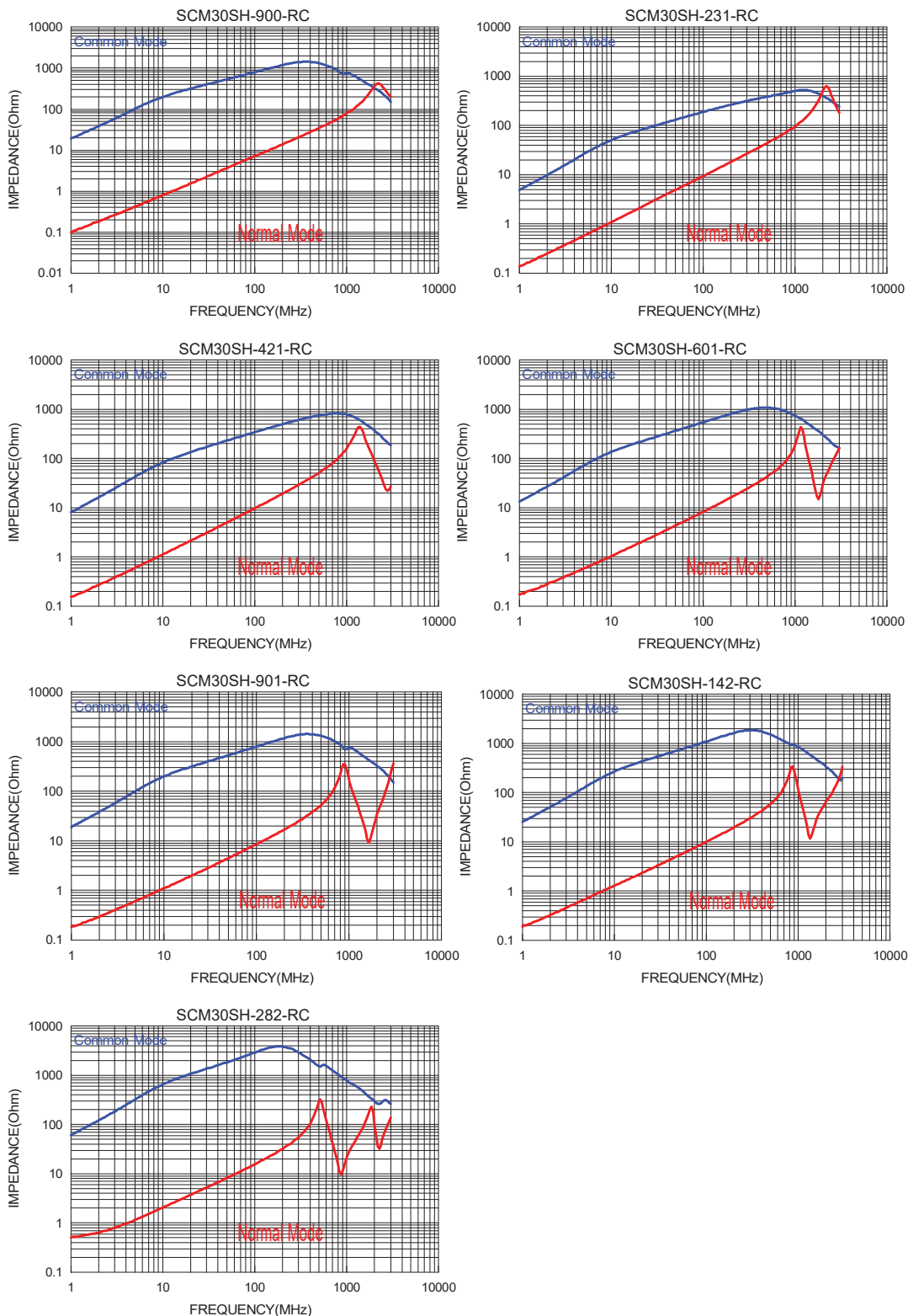




# SMD High Current Common Mode Filter

# SCM30SH

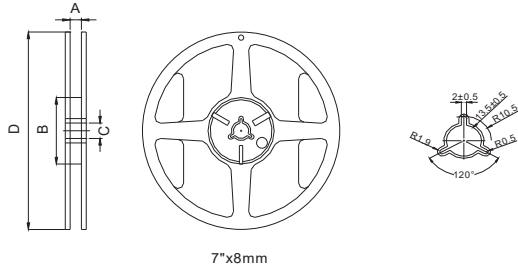
## Impedance Curve





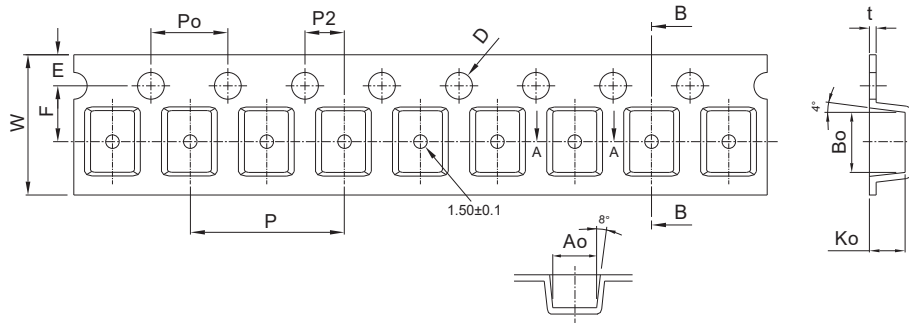
Packaging Information

(1) Reel Dimension



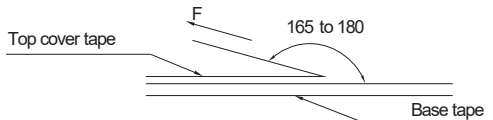
Type	A(mm)	B(mm)	C(mm)	D(mm)
178x12mm	13.5±0.5	60±2.0	13.5±0.5	178±2.0

(2) Tape Dimension



Bo(mm)	Ao(mm)	Ko(mm)	P(mm)	W(mm)	t(mm)	E(mm)	F(mm)	D(mm)	Po(mm)	P2(mm)
4.90±0.1	3.6±0.1	3.0±0.1	8.0±0.1	12.0±0.1	0.26±0.05	1.75±0.1	5.5±0.05	1.5+0.1/-0.0	4.0±0.1	2.0±0.05

(3) Tearing Off Force



The force for tearing off cover tape is 15 to 80 grams in the arrow direction under the following conditions.

Room Temp. (°C)	Room Humidity (%)	Room atm (hPa)	Tearing Speed mm/min
5~35	45~85	860~1060	300

**Application Notice**

- Storage Conditions

To maintain the solderability of terminal electrodes:

1. SCM30SH products meet IPC/JEDEC J-STD-020D standard-MSL, level 1.
2. Temperature and humidity conditions: Less than 40°C and 60% RH.
3. Recommended products should be used within 12 months from the time of delivery.
4. The packaging material should be kept where no chlorine or sulfur exists in the air.

- Transportation

1. Products should be handled with care to avoid damage or contamination from perspiration and skin oils.
2. The use of tweezers or vacuum pick up is strongly recommended for individual components.
3. Bulk handling should ensure that abrasion and mechanical shock are minimized.