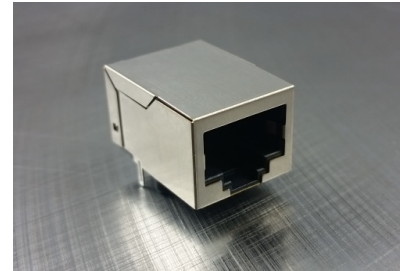


Single Port RJ45

AR11-4009

- 10 Base-T for Ethernet Applications
- Standard operating temp: 0°C to +70°C
- RJ45 jack cavity conforms to FCC rules and regulations Part 68, SUB Part F

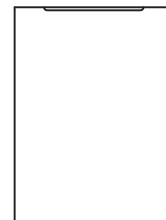
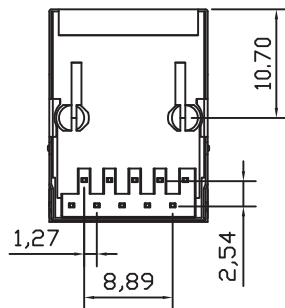
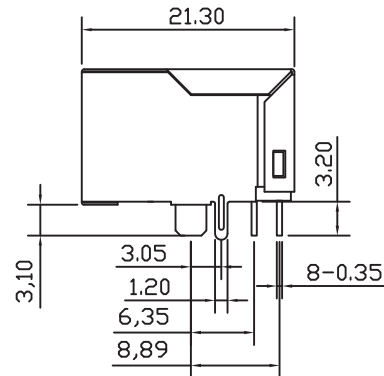
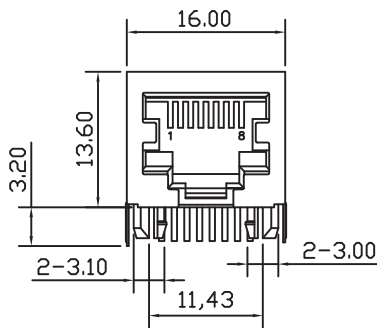


Electrical Specifications @ 25°C

Part Number	Turns Ratio chip: cable (± 2%)	Cross Talk (dB Min) 1-10MHz	Insertion Loss (dB Max) 5-10MHz	Return Loss (dB Min) @ Load 100 Ohm 5-10MHz	CMR (dB Min) 1-10MHz	HI-POT 1.0mA (V)	
						without capacitance	with capacitance
AR11-4009	1CT:1CT	-30	-1.0	-15	-50	1500	2250

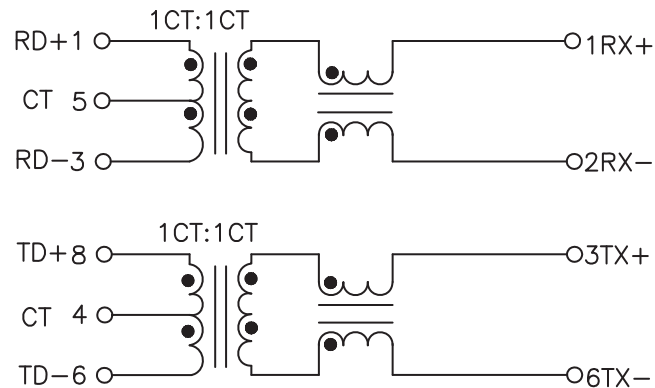
All specifications subject to change without notice.

MECHANICAL

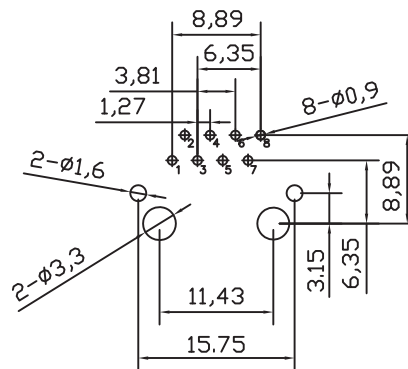




## SCHEMATICS



## PCB LAYOUT



## NOTES

1. Shield- 0.20mm THICKNESS BRASS C2680 H.  
PLATING NICKEL 20u" Min.
2. Housing- Standard Material LCP, Glass filled  
Polyester UL94V-0 Standard Color Black.
3. RJ Terminal- Plastic: Nylon66, UL94V-0, Standard  
Color Black.  
Pin: 0.35mm Thickness Phos-Bronze C5210 EH.  
Plating: Nickel 40u"-60u" for all and Sn 100%, and  
6u" and 50" Gold Plating.
4. Input Terminal: Nylon66, Glass Filled, UL94V-0,  
Standard Color Black.  
Pin: 0.35mm Thickness SUS430.  
Plating: Nickel 40u"-60u" for all and Sn 100%.