



## TRANSFORMER FOR PoE APPLICATIONS

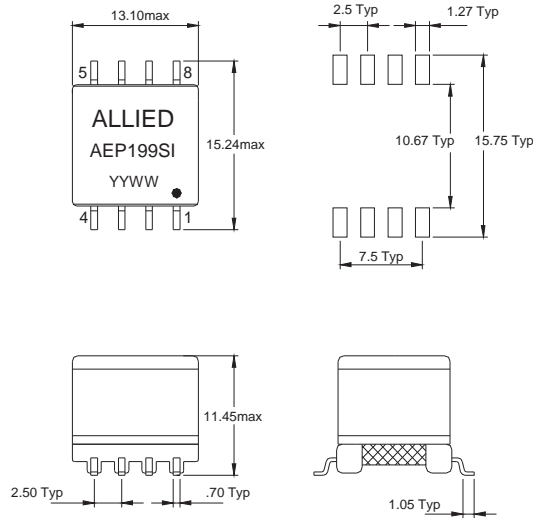
- EP Transformer Design
- Meets the IEE 802.3af Standard
- SMD design providing compact foot print
- Industrial Operating Temp: -40°C to +85°C

### Electrical Specifications @25°C

Part Number	Turns Ratio (10KHz,0.1V)	OCL (10KHz,0.1V)	Leakage L (100KHz,0.1V)	DCR			Hi-Pot	
				(3-4)	(2-1)	(5-8)	(1-2-3-4) to (5-8)	(1-2-3-4-5-8) to Core
AEP199SI	(3-4):(5-8):(2-1)	(3-4)	(3-4) (short 5-8-2-1)	(3-4)	(2-1)	(5-8)	(1-2-3-4) to (5-8)	(1-2-3-4-5-8) to Core
	1:0.44:39±2%	20.4µH ± 8%	1.5µH Max.	0.08Ω Max.	0.105Ω Max	0.03Ω Max.	1500VDC	500VDC

All specifications subject to change without notice.

## MECHANICAL



Units:mm

Unless otherwise specified all tolerances are:±0.25 in mm

## SCHEMATICS

